

**Legend:**

- 19Deg ETC S4 @ 575w
- 26Deg ETC S4 @ 575w
- 36Deg ETC S4 @ 575w
- 50Deg ETC S4 @ 575w
- Altman 1KL @ 500w
- Altman 6x9 @ 500w
- Altman Minizoom @ 500w
- Martin Mac 300
- Martin Roboscan 518
- VariLite VL-2000
- Elation Active Scan
- VNSP ETC S4 Par @575w
- NSP ETC S4 Par @575w
- MFL ETC S4 Par @575w
- WFL ETC S4 Par @575w
- ETC Parnel @575w
- NSP Par 56 @300w
- MFL Par 56 @300w
- WFL Par 56 @300w
- NSP Par 64 @500w
- MFL Par 64 @500w
- WFL Par 64 @500w
- ACL Par 64
- Altman 6" fresnel
- Whitfield Green laser
- Altman Spectra Cyc 100
- Diversitronics DK-56
- Citic Starhaze 3

**Accessories:**

- 7" Forerunner
- 7" ColorRam 2
- Template holder
- Iris
- 7.5" barndoor

**Key:**

- Front RXX
- RXXA
- Purpose
- Color
- Gobo
- Unit #
- Channel

Note: Black back cap indicates higher wattage lamp. See instrument schedule for lamp type

**Notes:**

- All units on 1'6" centers unless otherwise noted
- All deck units to be secured to deck after focus
- All Pars spread L->R, all fresnels spotted
- Drop all color prior to focus
- Have plenty of R119 & R132 available for focus
- Final Hazer position TBD by designer on site.
- Boom units can clamp directly to boom, or side armed at Master electricians discretion
- Hanging houselights to be trimmed up, or moved if blocking lights in the cove

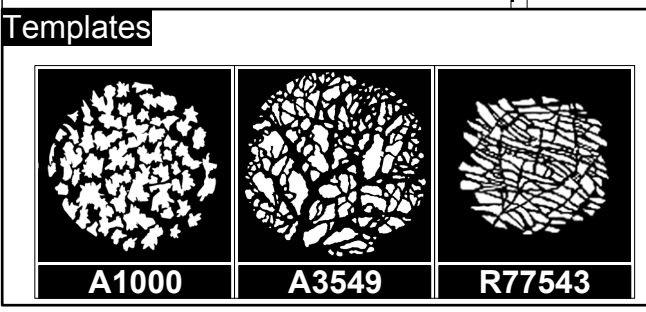
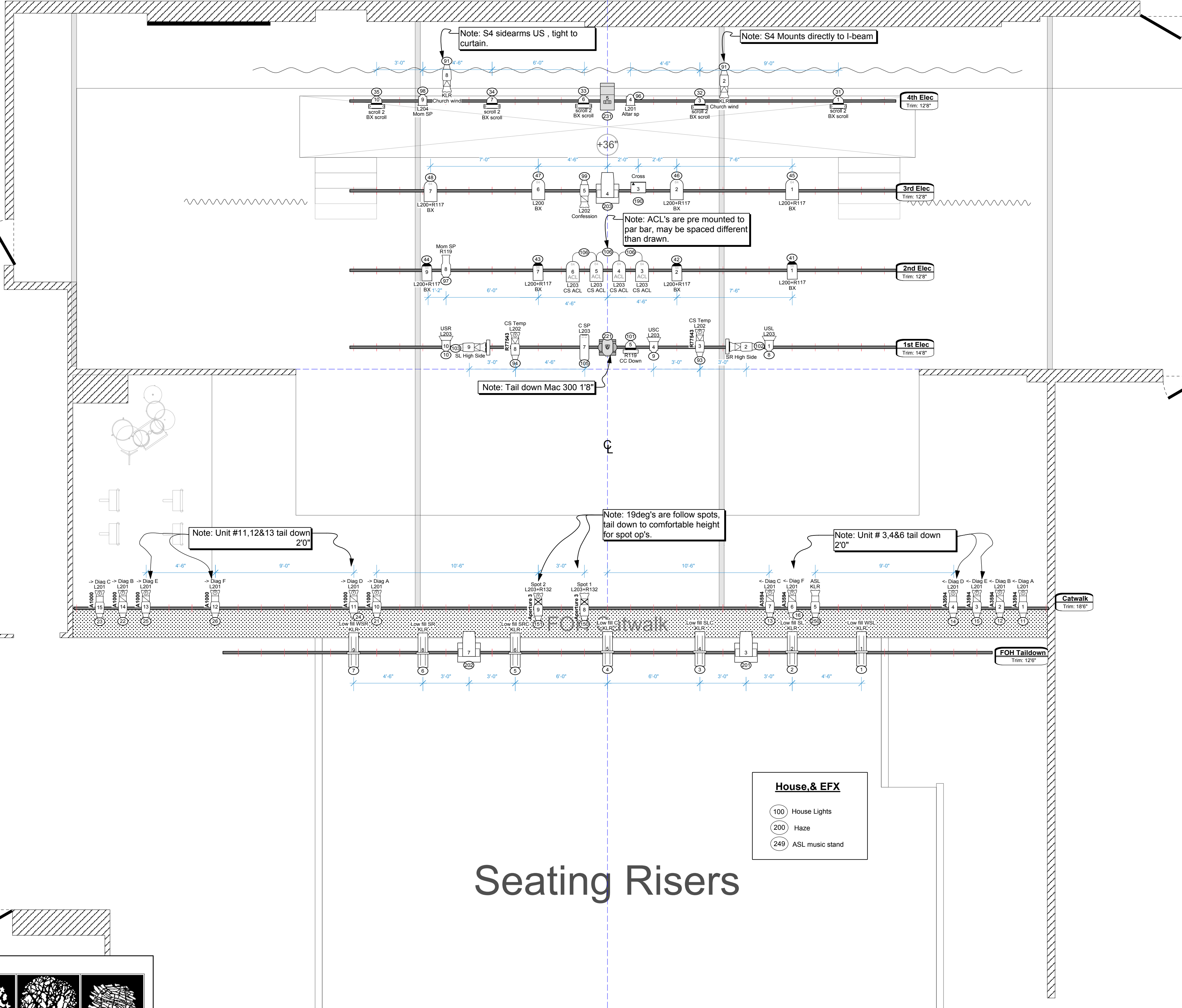
**Revisions:**

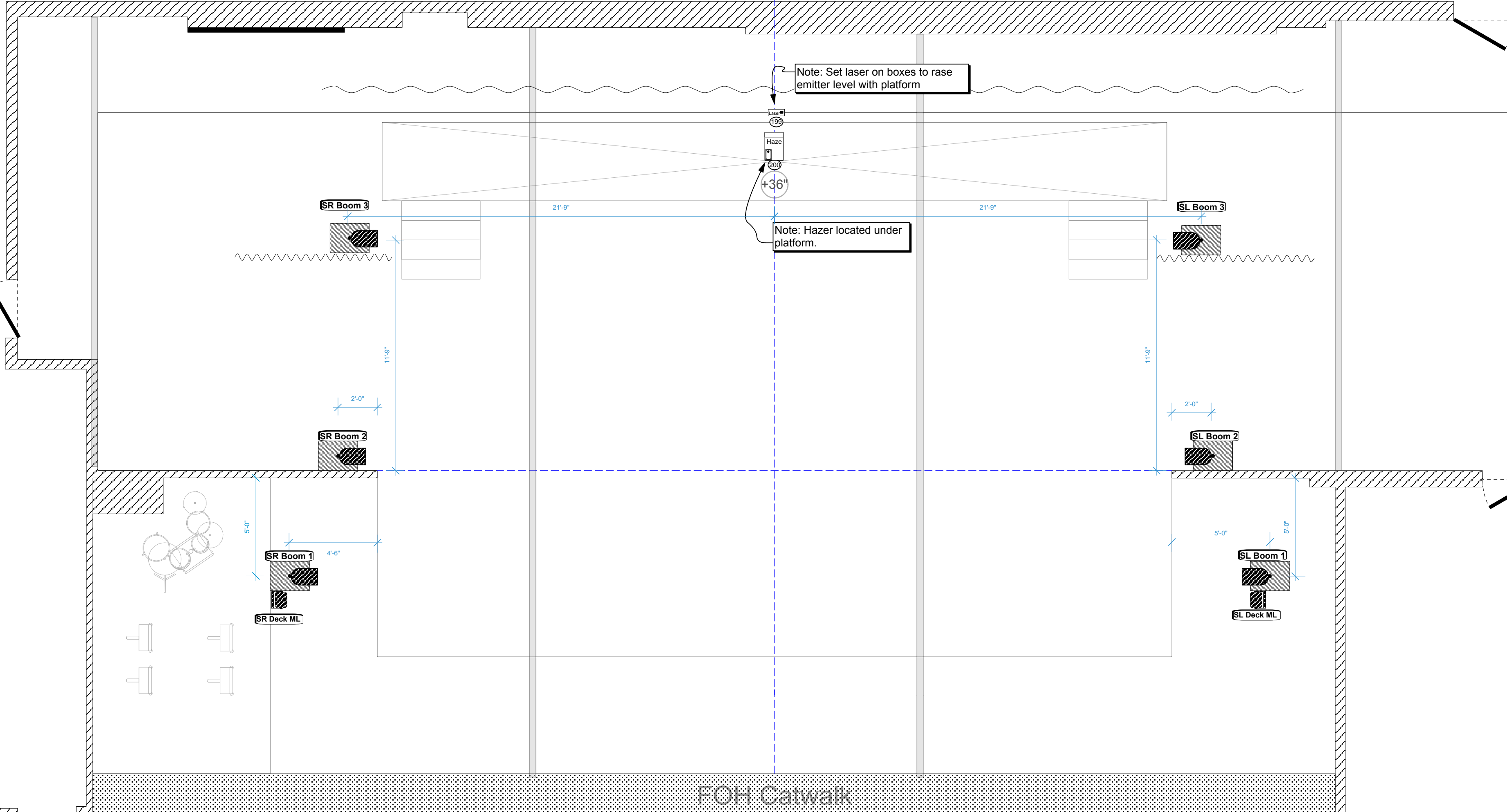
Rev.	Description	Date
A	Preliminary: For discussion only	12/10/13
B	Updated as per discussions	12/26/13
C	Added US fill units on 1 elec	12/29/13
D	Removed units cut during focus	1/1/14
E	Led footlights cut	1/2/14
F	Moved booms, updated ML's	1/2/14
G	Final archive copy	1/26/14

Lighting design by:  
**Jeremy Dominik**  
 Lighting Dir. / TD: Chris Henning  
 Directed by: Eric Johnson  
 Scenic Design: Alex Austin



Overhead Plot  
 Perf At: East End Theater  
 Drawn By: JDD Date: 1/4/13 Scale: 1/4"=1'  
 Version **2**  
 1 of 3 Plate





- Legend:**
- 19Deg ETC S4 @ 575w
  - 26Deg ETC S4 @ 575w
  - 36Deg ETC S4 @ 575w
  - 50Deg ETC S4 @ 575w
  - Altman 1K1 @ 500w
  - Altman 6x9 @ 500w
  - Altman Minizoom @ 500w
  - Martin Mac 300
  - Martin Roboscan 518
  - VariLite VL-2000
  - Elation Active Scan
  - VNSP ETC S4 Par @575w
  - NSP ETC S4 Par @575w
  - MFL ETC S4 Par @575w
  - WFL ETC S4 Par @575w
  - ETC Parnel @575w
  - NSP Par 56 @300w
  - MFL Par 56 @300w
  - WFL Par 56 @300w
  - NSP Par 64 @500w
  - MFL Par 64 @500w
  - WFL Par 64 @500w
  - ACL Par 64
  - Altman 6" fresnel
  - Whitfield Green laser
  - Altman Spectra Cyc 100
  - Diversitronics DK-56
  - Citic Starhaze 3

- Accessories:**
- 7" Forerunner
  - 7" ColorRam 2
  - Template holder
  - Iris
  - 7.5" barndoor

- Key:**
- Front RXX
  - Purpose
  - Color
  - Gobo
  - Unit #
  - Channel
- Note: Black back cap indicates higher wattage lamp. See instrument schedule for lamp type

**Notes:**

- All units on 1'6" centers unless otherwise noted
- All deck units to be secured to deck after focus
- All Pars spread L->R, all fresnels spotted
- Drop all color prior to focus
- Have plenty of R119 & R132 available for focus
- Final Hazer position TBD by designer on site.
- Boom units can clamp directly to boom, or side armed at Master electricians discretion
- Hanging houselights to be trimmed up, or moved if blocking lights in the cove

**Revisions:**

Rev.	Description	Date
A	Preliminary: For discussion only	12/10/13
B	Updated as per discussions	12/26/13
C	Added US fill units on 1 elec	12/29/13
D	Removed units cut during focus	1/1/14
E	Led footlights cut	1/2/14
F	Moved booms, updated ML's	1/2/14
G	Final archive copy	1/26/14

Lighting design by:  
**Jeremy Dominik**

Lighting Dir. / TD: Chris Henning  
Directed by: Eric Johnson  
Scenic Design: Alex Austin

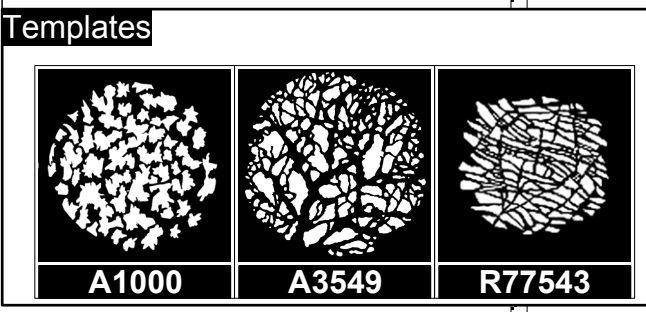
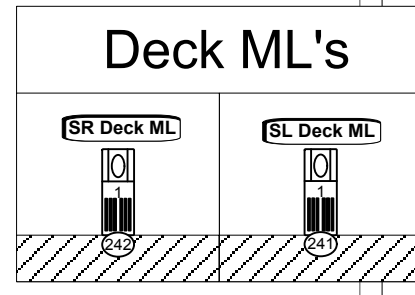
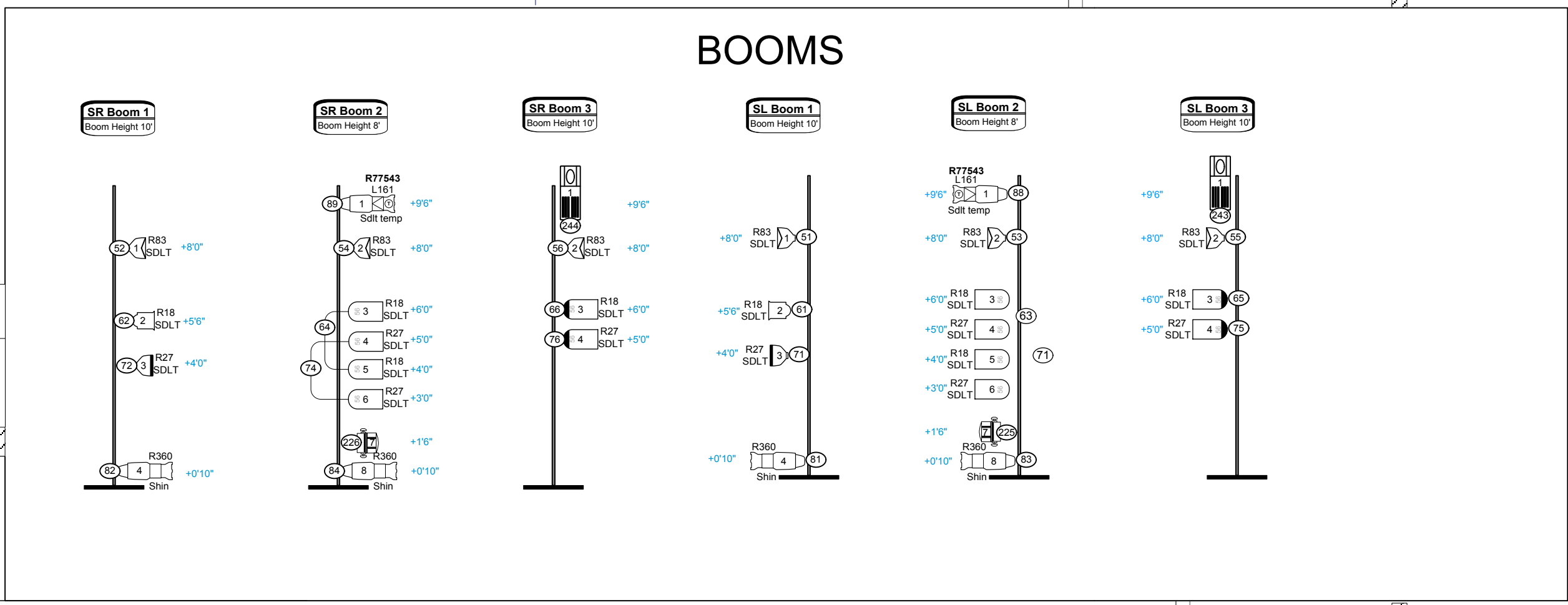


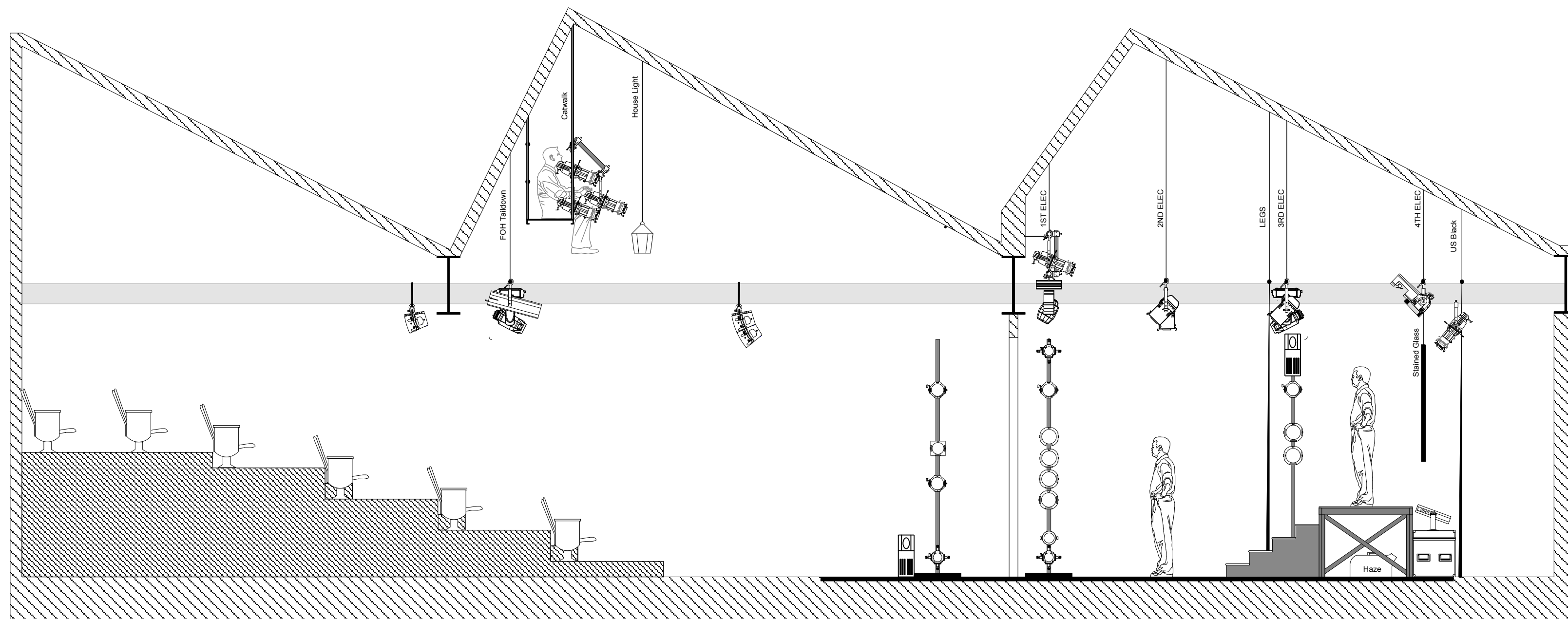
**Deck Plot**

Perf At: East End Theater

Drawn By: JDD Date: 1/4/13 Scale: 1/4"=1'

Version **2** of 3 Plate





**Legend:**

- |  |                        |  |                        |
|--|------------------------|--|------------------------|
|  | 19Deg ETC S4 @ 575w    |  | VNSP ETC S4 Par @ 575w |
|  | 26Deg ETC S4 @ 575w    |  | NSP ETC S4 Par @ 575w  |
|  | 36Deg ETC S4 @ 575w    |  | MFL ETC S4 Par @ 575w  |
|  | 50Deg ETC S4 @ 575w    |  | WFL ETC S4 Par @ 575w  |
|  | Altman 1KL @ 500w      |  | ETC Panel @ 575w       |
|  | Altman 6x9 @ 500w      |  | NSP Par 56 @ 300w      |
|  | Altman Minizoom @ 500w |  | MFL Par 56 @ 300w      |
|  | Martin Mac 300         |  | WFL Par 56 @ 300w      |
|  | Martin Roboscan 518    |  | NSP Par 64 @ 500w      |
|  | Variilite VL-2000      |  | MFL Par 64 @ 500w      |
|  | Elation Active Scan    |  | WFL Par 64 @ 500w      |
|  |                        |  | ACL Par 64             |
|  |                        |  | Altman 6" fresnel      |
|  |                        |  | Whitfield Green laser  |
|  |                        |  | Altman Spectra Cyc 100 |
|  |                        |  | Diversitronics DK-56   |

**Accessories:**

- |  |               |  |                 |
|--|---------------|--|-----------------|
|  | 7" Forerunner |  | Template holder |
|  | 7" ColorRam 2 |  | Iris            |
|  |               |  | 7.5" barndoor   |

**Key:**

- |  |                |   |         |
|--|----------------|---|---------|
|  | Front          |   | Purpose |
|  | RXX            |   | Color   |
|  | G              |   | Gobo    |
|  | Unit #         |   | Channel |
|  | Black back cap | Note: Black back cap indicates higher wattage lamp. See instrument schedule for lamp type |         |

**Notes:**

- All units on 1"6" centers unless otherwise noted
- All deck units to be secured to deck after focus
- All Pars spread L->R, all fresnels spotted
- Drop all color prior to focus
- Have plenty of R119 & R132 available for focus
- Final Hazer position TBD by designer on site.
- Boom units can clamp directly to boom, or side armed at Master electricians discretion
- Hanging houselights to be trimmed up, or moved if blocking lights in the cove

**Revisions:**

Rev.	Description	Date
A	Preliminary: For discussion only	12/10/13
B	Updated as per discussions	12/26/13
C	Moved booms, updated ML's	1/2/14
D	Final archive copy	1/25/14

Lighting design by:

**Jeremy Dominik**

Lighting Dir. / TD: Chris Henning  
 Directed by: Eric Johnson  
 Scenic Design: Alex Austin



<b>Section View</b>		<b>2</b> Version
Perf At: East End Theater		
Drawn By: JDD	Date: 1/25/13	Scale: 1/4"=1' 3 of 3 Plate